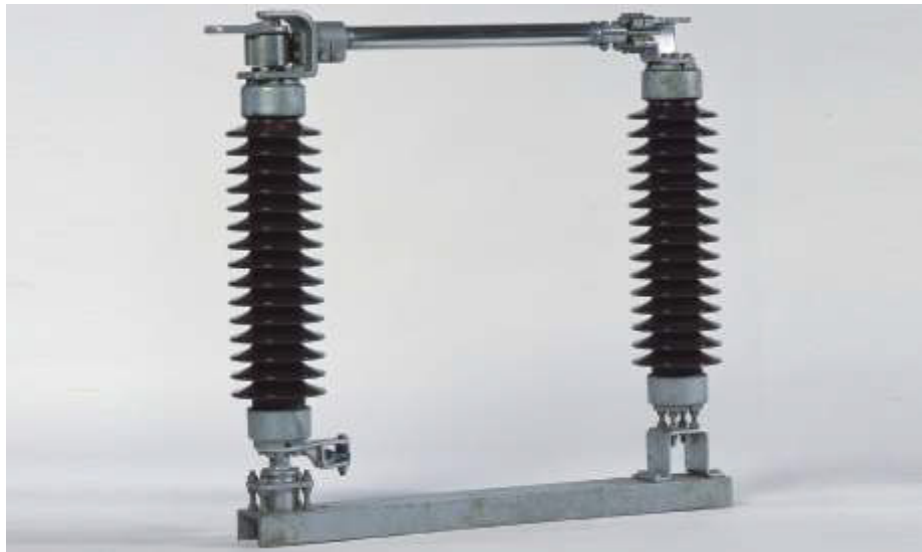


ACTOM OUTDOOR DISCONNECTORS

Single Side Break (SSB) Disconnecter 22-132 kV, 800-1600 A, 25 kA-3s



Voltage range 11 kV to 132 kV current rating up to 1 600 amps with relevant through fault current rating up to 25 kA

- Our simple yet robust design enables easy inexpensive installation, maintenance and operation. All pivots are bushed with self-lubricating or graphite nylon bearings. The main swivel bearing incorporates twin taper roller bearings, grease filled and sealed for life. Only switch contacts require the usual lubrication, therefore maintenance is reduced to a minimum. The single break disconnecter and operating mechanism drives are fully universal and thus are suitable for horizontal, vertical or inverted mounting on a concrete or steel support structure.
- Reverse loop design fixed contact fingers of HD HC copper with silver plated contact area. Each finger

is backed by a stainless steel compression spring to ensure positive contact pressure, the springs being insulated from the current path.

- Interchangeable moving contacts of HC extruded copper section, the profile designed for high density current and multipoint contact. A wiping cleaning action is produced by the opening and closing operations.
- Aluminium main blade tube wall thickness to suit current rating clamped into hinge contact assembly.
- Terminal pads of aluminium or copper alloy with standard BS or

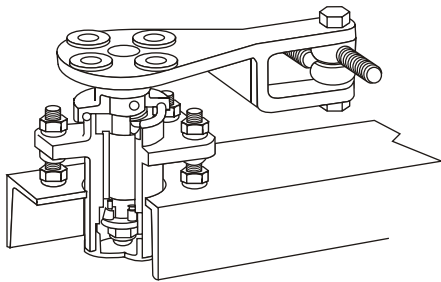
NEMA four-hole fixings as required. Terminal connectors can be provided if required.

- Base section of galvanised steel channel, with insulator leveling/fixing screw on each post. Fixing holes on centre line positioned to suit customer requirements (refer to table of dimensions).
- Rotating post main bearing assembly incorporating well spaced double taper roller bearings, preloaded to compensate for heavy high voltage insulators. The housing is packed with grease on assembly and is sealed for life, thus eliminating further maintenance.

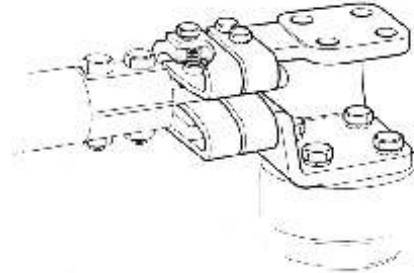
Address: 4 Branch Road, Germiston 1401, P.O. Box 678, Germiston 1400

ACTOM OUTDOOR DISCONNECTORS

Single Side Break (SSB) Disconnecter 22-132 kV, 800-1600 A, 25 kA-3s



Typical bearing assembly.



Fixed contact support showing springs and insulating cap.

- Galvanised steel nominal bore pipe phase coupling and vertical drive rods with left hand and right hand inserts at each end and screwed eyebolts providing 50 mm length adjustment by simply rotating the rods clock wise or anti-clockwise. This feature allows wide tolerances on dimensions regarding mounting and erection, also enabling easy alignment for synchronised gang

operation of all three phase units.

- Hinge contact assembly allowing rotation of the blade and insulator column, whilst the terminal pad can remain stationary. The continuous current path maintained across the hinge point by means of tinned copper laminations bolted to the main support and the terminal pad casting.

Alternatively, an enclosed hinge contact assembly incorporating a copper alloy terminal stem as opposed to a terminal pad. point contact. A wiping cleaning action is produced by the opening and closing operations.



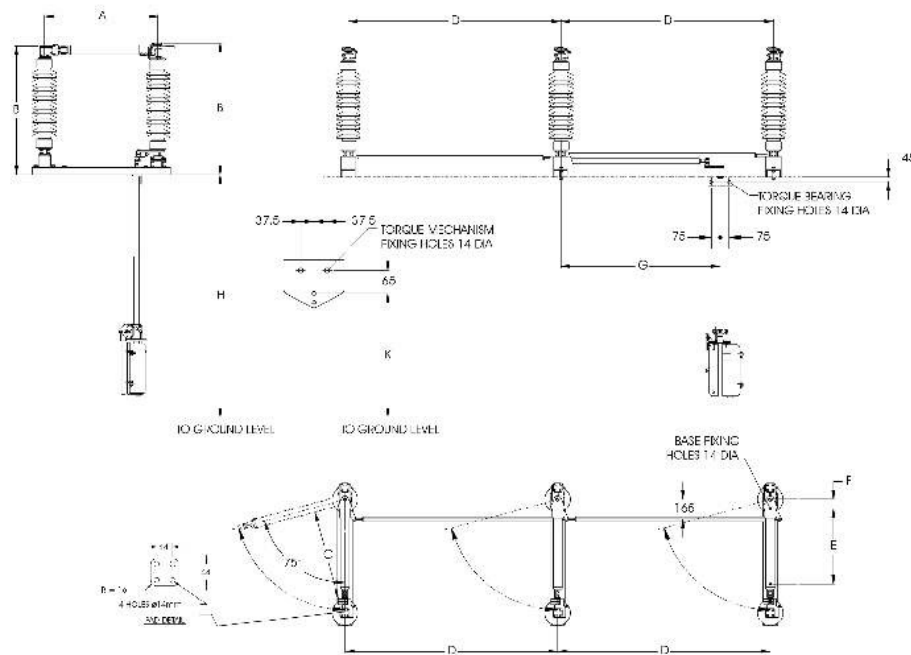
Open hinge unit.



Enclosed hinge unit.

ACTOM OUTDOOR DISCONNECTORS

Single Side Break (SSB) Disconnecter 22-132 kV, 800-1600 A, 25 kA-3s



Product Information (standard dimensions in mm):

Nominal working voltage	Impulse withstand voltage	Post centres	Terminal pad height	Isolating distance	Minimum phase centres	Standard base fixing centres	Minimum dimension	Mounting height	Operating mechanism height	
		A	B	C	D*	E*	F*	G*	H*	K*
22 kV	150 kV	530	630	320	900	330	80	600	as req'd	1 100
33 kV	200 kV	640	760	440	1 100	440	80	600	as req'd	1 100
44 kV	250 kV	710	870	500	1 250	510	80	600	as req'd	1 100
66 kV	350 kV	960	1 070	760	1 700	760	80	600	as req'd	1 100
88 kV	380 kV	1 230	1 280		2 400	914	100	1 762	2 438	1 100
132 kV	550 kV	1 550	1 646		3 000	1 066	100	2 376	2 500	1 100

*Actual dimensions required at the time of an order

Address: 4 Branch Road, Germiston 1401, P.O. Box 678, Germiston 1400

Complete your Project:

Please select the items you require and we will be in touch

Cables and Wires:

Indoor
Outdoor
General
Other
Let an ACTOM
Specialist Contact you

Lighting:

Indoor
Outdoor
General
Other
Let an ACTOM
Specialist Contact you

Transformers

Indoor
Outdoor
General
Other
Let an ACTOM
Specialist Contact you

Accessories:

Indoor
Outdoor
General
Other
Let an ACTOM
Specialist Contact you

Specific Information:

Address: 4 Branch Road, Germiston 1401, P.O. Box 678, Germiston 1400

For more Information on this Product Please Send us the Following

Product Information:

Product Name:

Quantity:

Project Name:

Date the Product is required:

Your Contact Information:

Name and Surname:

Company:

Email:

Phone Number:

Province:

Thank You

For having a Look at this Product

Please send this PDF back to us with all your Information

Scan the QR Code to visit our Website:

